



HOME > PRODUCTS > PROJECTORS > EPSON EB-X03

Epson EB-X03



Corporate Portable Multimedia Projectors

Affordable XGA performance in a portable business projector.

[click for Larger Image](#)

If you are interested in purchasing an Epson Multimedia projector for business use, please call **1300 361 054**

[Printer Friendly Specs](#)

[Distance Calculator](#)

Overview

The Epson EB-X03 XGA Projector offers essential business features at a cost-effective price. With compact design and easy setup, this XGA performer gets you up and running in no time. The EB-X03 delivers exceptional image quality for compelling presentations with 2700 lumens of colour brightness and 2700 lumens of white brightness. Now with HDMI Connectivity, easy-slide keystone correction and a fast optional wireless connection, your business will reach a new level. No matter where business takes you, you'll be ready with this versatile projector.

KEY FEATURES & BENEFITS

3 x Brighter Colours and reliable performance* – 3LCD, 3-Chip Technology. Look for both high colour brightness and high white brightness

One measurement of brightness is not enough – Look for both colour brightness and white brightness. The Epson EB-X03 has:

Colour Brightness: 2,700 lumens

White Brightness: 2,700 lumens

HDMI input for high-quality, high-definition video – Deliver both audio and brilliant HD video content with just one cable

Automatic Vertical Keystone Adjuster – This function automatically detects the projector's vertical angle and adjusts the vertical keystone distortion instantly

USB Plug 'n Play – Transmit images, sound and mouse operation through one USB cable

Optional Wireless connection to your laptop and mobile device – Connect directly to your computer, smartphone or tablet, without wires.

Epson iProjection™ – Wirelessly display and control content from your iPhone®, iPad®, iPod touch® and Android™ devices with the app

Low Cost of Ownership & Maintenance – The EB-X03 utilises a lamp priced at \$99 for up to 6,000 hours, and makes use of a High Efficiency Filter; extending the life of your projector and allowing for hassle free maintenance

3x Brighter Colours with Epson*

Brilliant image quality requires high colour brightness (colour light output), and Epson® 3LCD projectors have 3 x Brighter Colours than leading competitive projectors*. One brightness measurement (lumens) is not enough. A projector's specification needs to show both high colour brightness and high white brightness. If colour brightness is lower than white brightness, images may be dark, dull and lose detail. If not provided, be sure to ask for a projector's colour brightness specification.

** Compared to leading 1-chip DLP business and education projectors based on NPD data, July 2011 through June 2012. Colour brightness (colour light output) measured in accordance with IDMS 15.4. Colour brightness will vary depending on usage conditions.*



HDMI input for high-quality, high-definition video

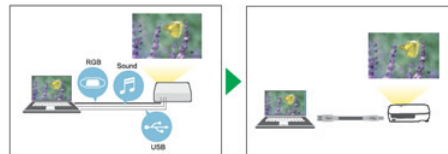
Deliver both audio and brilliant HD video content with just one cable. Compatible with the latest laptops, Blu-ray® and media players.

Automatic Vertical Keystone Adjuster

Take all the guesswork out of setting up your projector, thanks to the Auto Keystone function. This function automatically detects the projector's vertical angle and adjusts the vertical keystone distortion instantly.

USB Plug 'n Play

Epson's advanced 3 in 1 USB connectivity enables instant Plug 'n Play setup for Video, Audio and Control. Forget about complicated computer key sequences and non-intuitive controls. Instead, just plug in a standard USB cable and let your presentation impress the audience.



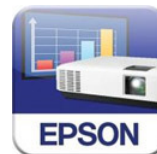
Wireless connection to your laptop and mobile device

The EB-X03 has convenient wireless features built-in to connect wirelessly to a computer or laptop via a direct peer-to-peer connection. Also connect wirelessly to a network and make a presentation or monitor/control your projector over the wireless network. (Wireless LAN Card NOT included).

For incredibly easy peer-to-peer wireless connection on the fly without the need for additional software, add the ELPAP09 Easy MP wireless connection USB Key.

Epson iProjection App

Display and control content from your iPhone, iPad or iPod and Android devices with the Epson iProjection App on any nearby wireless or networked Epson projector. This free application allows road warriors to travel light and present from their mobile devices. For teachers, it makes it easy to walk around the class and still be able to share engaging content — larger-than-life. The app is easy to use and navigate with intuitive menu options that make it simple to bring your content to the big screen.



Low Cost of Ownership & Maintenance

The EB-X03 utilises a lamp priced at \$99 and makes use of a High Efficiency Filter; extending the life of your projector and allowing for hassle free maintenance.

Lamp life for the EB-X03 has an impressive 5,000 hours in high brightness mode or an amazing 6,000 hours in ECO mode. We even back our lamps with a full 12 month, 750 hour* lamp warranty giving you peace of mind. By the time you need to change the lamp in these products, you may have changed up to 2.5 lamps if you had used a competitor's product from this category.

Maintaining the EB-X03 is easy even when ceiling mounted. Changing the filter or lamp is a simple in-situ, end-user changeable operation meaning you don't require the additional expense of a visit from a service agent. Users can also update projector firmware on their own via Network, a USB thumb drive or USB-B input. * *Whichever comes first*

HOME > PI

Connectivity Panel



Specification

PRODUCT NAME	Epson EB-X03
PRODUCT CODE	V11H555053
WHAT'S IN THE BOX	Power Cable, Remote Control + Batteries, User's Manual, 1.8m Computer Cable
TECHNOLOGY	
Projection System	Epson 3LCD, 3-chip technology
LCD Panel	0.55-inch without MLA (D7)
OPTICAL	
Zoom	1 - 1.2 (Digital)
Screen Size	30" to 300" [0.9 to 9.0m] (Zoom: Tele) 30" to 300" [1.08 to 10.8 m] (Zoom: Wide)
Projection Distance	60" screen 1.8 - 2.17 m
Throw Ratio	1.48 (Zoom: Wide), 1.77 (Zoom: Tele)
Projection Lens F Number	1.58 - 1.72
Projection Lens Focal Length	16.7 mm
Offset	8:01
IMAGE	
Colour Light Output	2,700 Lumens
White Light Output	2,700 Lumens
Resolution	XGA
Native Aspect Ratio	4:3
Contrast Ratio	10,000:1
Lamp Hours	Normal: 5,000 Hours / Eco: 6,000 Hours
Lamp Type	200 W UHE
Keystone Correction	Vertical: -30 to +30 degrees Horizontal: -30 to +30 degrees
CONNECTIVITY	
Input: Video	1 x RCA (Yellow), 1 x S-Video, 1 x Component (via D-sub 15-pin), 1 x HDMI
Input: Computer	1 x D-sub 15-Pin (RGB), 1 x USB 2.0 type B
Input: USB Memory Device	1 x USB 2.0 type A
Input: Digital	1 x HDMI
Input: Audio	1 x RCA (Red and White), 1 x HDMI
Input: Control	1 x USB 2.0 type B
Input: Epson USB Document Camera	Yes
Wireless Connectivity	Optional
Speaker Output	1W
ADVANCED FEATURES	
EasyMP Network & Control	Yes (with optional Wireless LAN Unit)
EasyMP Network Projection	Yes (with optional Wireless LAN Unit)
PC Free Presentations	Yes
USB Plug 'n Play	Yes
AV Mute Slide	Yes
Instant Off	Yes
Direct Power On/Off	Yes
Security	Kensington lock Security cable hole Password protect function
Colour Modes	Dynamic, Presentation, Theatre, Photo, sRGB, Blackboard, Whiteboard
GENERAL	
Dimensions D x W x H	234 x 297 x 77 mm
Weight	2.4 kg
Lamp Warranty	12 months or 750 hours*
Projector Warranty	2 Years
Power Consumption: Lamp on	Normal: 270W / Eco: 201W

Power Consumption: Standby	0.28W (communication off)	
Noise Level	Normal: 37dB / Eco: 29dB	
PRODUCT OPTIONS	Item Code	Description
	V12H418P13	Wireless LAN Card
	V12H005M09	Quick Wireless Key
	V12H002S2Y	Floor Standing Tripod Screen
	V13H010L67	Lamp – ELPLP78
	V13H134A32	Air Filter – ELPAF32
	V12H003B23	Ceiling Mount
	V12H003P13	Extension Pole 668-918mm
	V12H003P14	Extension Pole 918-1,168mm
<p>Epson is the registered trademark of Seiko Epson Corporation. Epson ESC/P2 and Epson Stylus are trademarks of Seiko Epson Corporation. MicroDot is a trademark of Epson Australia Pty Limited. All other product names and other company names used herein are for identification purposes only and may be the trademarks or registered trademarks of their respective owners. Epson disclaims any and all rights in those marks. Specifications are subject to change without notice.</p>		
<p>Equipment supplied by Epson Australia is designed to function in conjunction with genuine Epson consumables and accessories specifically configured for it.</p>		
<p>Usage Conditions Epson products are designed and made to give highly reliable use and long life when used according to its specifications. With any system, product or device used in situations where human life may be involved or at risk, Epson advises that you should take all necessary steps to ensure the suitability of your Epson product for inclusion in your system, and recommends that you include fail-safe procedures and redundancy support or backup equipment in your system, to maintain the maximum safety margin and optimum system reliability. Examples include but are not limited to – do not interfere with any electrical components within the device, do not use items supplied with the product for purposes other than as intended by Epson (ie mains cords, inks, CDs, plastic wrapping) and do not make modifications to the product.</p>		

Consumables

ACCESSORIES & OPTIONS	PRODUCT CODE
<u>80" Portable tripod screen ELPSC21B</u>	V12H002S2Y
<u>450mm Suspension Adapter - ELP-FP13</u>	V12H003P13
<u>Extension Pole - 918mm to 1,168mm - ELP-FP14</u>	V12H003P14
<u>Wireless LAN Adapter - ELPAP07</u>	V12H418P13
<u>Quick Wireless Key - ELPAP09</u>	V12H005M09
<u>Epson Ceiling Mount - ELPMB23</u>	V12H003B23
<u>Epson Projector Lamp - ELPLP67</u>	V13H010L67
<u>Epson Air Filter - ELPAF32</u>	V13H134A32
<p>Epson is the registered trademark of Seiko Epson Corporation. Epson STYLUS, PerfectPicture, MicroPiezo, AcuPhoto Halftoning, QuickDry are the trademarks of Seiko Epson Corporation. All other names and company names used herein are for identification purpose only and may be the trademarks or registered trademarks of their respective owners. Epson disclaims any and all rights in those marks. All print samples shown herein are imulations. Specifications are subject to change without notice.</p>	