



Customized third party enclosure shown is not included.

# Maximum visibility day or night, rain or shine



## OHD series all-in-one outdoor signage displays

Drive-thru menu boards, outdoor wayfinding, and outdoor messaging of any type is now simpler and slimmer. Samsung's OHD series outdoor signage solution is a completely integrated, self-contained display incorporating the latest innovative Samsung technologies, all in a single, slim design. There's no need for a robust third party enclosure. A patent-pending steady cooling system means there's no need for a supplementary heating or air conditioning unit. The IP56-certified display incorporates patent-pending reflection-canceling glass that protects against vandalism and graffiti, so performance is assured and maintenance is made easier. Samsung OHD displays offer 3,000 nits or 2,500 nits with Auto Brightness, so outdoor images will always be big, bright and beautiful.

### Contact us

1-866-SAM4BIZ  
[samsung.com/business](http://samsung.com/business)  
[samsung.com/b2bdigitalsignage](http://samsung.com/b2bdigitalsignage)

### Follow us

 [youtube.com/samsungbizusa](https://www.youtube.com/samsungbizusa)  
 @SamsungBizUSA

## Key features



### All-in-one signage solution

The OHD series incorporates the latest Samsung technology, including a slim 90.3mm depth panel, into a reliable, impactful and thin enclosure that's built to stand up to harsh weather conditions. There's no need for a robust third party enclosure. All that's required is a simple metal enclosure or optional stand. An integrated SoC media player is included for a complete and simple-to-manage solution, ready for virtually any outdoor environment.



### Reliable in any environment

Built for 24/7 high-performance message delivery in virtually any environment, Samsung OHD series displays can withstand extreme temperatures of -22° F to 122° F. They're IP56-certified, to withstand wind-driven dust, hose-driven water, rain, sleet, snow and corrosion.



### High visibility and brightness

With 3,000-nit brightness (2,500-nit on OH55D), 5,000:1 contrast ratio, auto brightness and patent-pending reflection-canceling glass that's viewable even with polarized sunglasses, businesses can be assured their messages are clear and vibrant.



### Simple content management

The easy-to-integrate content management platform features HDBase-T connection, Samsung's cloud-based 2nd Generation Smart Signage Platform, and MagicInfo Solutions, for responsive and real-time business messaging deployment.



### Lower Total Cost of Ownership (TCO)

Simplified installation, operation and maintenance combined with innovative design and construction generates long-term reliability and cost savings for business owners.



### Samsung Circular Polarizing Technology

Samsung's circular polarizing technology allows content to be easily viewed even while wearing polarized sunglasses.

# Samsung OHD series all-in-one outdoor signage displays

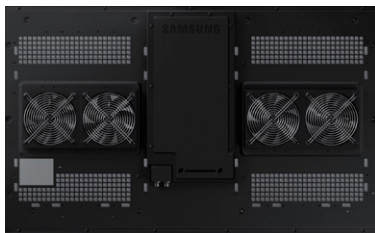


		OH46D	OH55D
Display	Screen Size / Panel Technology	46" / S-VA, LED Backlit	55" / S-VA, LED Backlit
	Resolution / Brightness	1920x1080 (16:9) / 3,000 nits	1920x1080 (16:9) / 2,500 nits
	Contrast Ratio	5,000:1	5,000:1
	Viewing Angle (Horizontal/Vertical)	178°/178°	178°/178°
	Orientation	Landscape / Portrait	Landscape / Portrait
	Response Time (G-to-G)	6ms	6ms
Connectivity	Input	RGB	VGA (D-sub 15 pin), DVI-D, Display Port 1.2
		Video	HDMI1, HDMI2, HDBaseT(LAN Common)
		Audio	Stereo Mini Jack
	Output	RGB	Display Port 1.2 (Loop-out)
		Audio	Stereo Mini Jack
	External Control	HDBaseT, RJ45	HDBaseT, RJ45
External Sensor	N/A	N/A	
Power	Power Supply (external)	AC 100 - 240 V~ (+/- 10 %), 50/60 Hz	AC 100 - 240 V~ (+/- 10 %), 50/60 Hz
	Power Consumption (Typical/Max)	412W / 600W	491W / 800W
	Power Consumption (Standby)	< 0.5W	< 0.5W
Environmental Conditions	Operating Temperature	0°C-40°C	0°C-40°C
	Humidity	10-80%	10-80%
Features	Special	IP56 Certified for Simple Enclosure Outdoor usage, Protection Glass(Anti Graffiti, Infrared Reduce), Polarized Sun Glasses Viewable in any direction, HD Base T for Long Distance Installalling, Portrait Installation Support, Button Lock, Lamp Error Detection, Auto Brightness Control with Ambient Brightness Sensor, Anti Image Retention, Temperature Sensor, Pivot Display, MagicInfo S, Smart Scheduling, RJ45 MDC, PIP/PBP, Auto Source Switching & Recovery	IP56 Certified for Simple Enclosure Outdoor usage, Protection Glass(Anti Graffiti, Infrared Reduce), Polarized Sun Glasses Viewable in any direction, HD Base T for Long Distance Installalling, Portrait Installation Support, Button Lock, Lamp Error Detection, Auto Brightness Control with Ambient Brightness Sensor, Anti Image Retention, Temperature Sensor, Pivot Display, MagicInfo S, Smart Scheduling, RJ45 MDC, PIP/PBP, Auto Source Switching & Recovery
	Tuner	N/A	N/A
	SMART Signage Platform Compliant	Yes	Yes
	Internal Media Player	Cortex-A9 1GHz Quad Core CPU, 1.5GB DDR3, 8GB FDM, USB 2.0, Samsung Proprietary OS (VDLinux)	Cortex-A9 1GHz Quad Core CPU, 1.5GB DDR3, 8GB FDM, USB 2.0, Samsung Proprietary OS (VDLinux)
	Wall Mount Interface	989.0 x 503.6 mm	1180.6 x 611.4 mm
	24/7 Operation	Yes	Yes
Dimensions	Product Dimensions (without stand)	42.1" x 24.6" x 3.56" (Set) 24.5" x 22.2" x 3.54" (Power Box)	49.6" x 28.8" x 3.56" (Set) 24.5" x 22.2" x 3.54" (Power Box)
	Packaging Dimensions Bezel Width (mm)	46.2" x 12.0" x 28.6" 24.9mm	54.3" x 12.8" x 33.1" 24.9mm
Weight	Product Weight / Shipping Weight	86.9 lbs. (Set), 18.9 lbs. (Power Box) / 119.7 lbs.	111.5 lbs. (Set), 18.9 lbs. (Power Box) / 146.5 lbs.
Service	Standard Warranty	3 Years On-Site (Parts / Labor / Backlight)	3 Years On-Site (Parts / Labor / Backlight)
Accessories	Included	Quick Setup Guide, Regulatory Guide, Warranty Card, Remote Controller, Batteries, BLU Power Cable, Main Power Cable	Quick Setup Guide, Regulatory Guide, Warranty Card, Remote Controller, Batteries, BLU Power Cable, Main Power Cable
	Optional Stand Enclosure	STN-E46D	STN-E55D
	Optional Media Player	N/A	N/A
Green Management	Emission Standard	Class A	Class A
	ENERGY STAR® 6.0 Compliant	N/A	N/A
	RoHS Compliant	Yes	Yes
	Packaging Recyclability	Packing Materials Recyclable	Packing Materials Recyclable

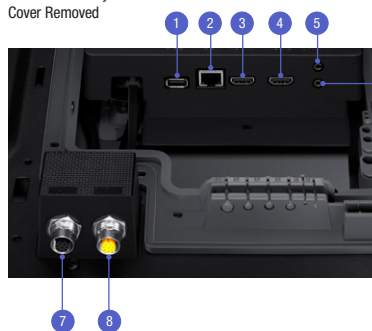
## CONNECTIVITY

1. USB
2. HDBT
3. HDMI1
4. HDMI2
5. Audio Out
6. UART In
7. Main Power In
8. BLU Power In
9. Power
10. Main Power Out
11. BLU Power Out

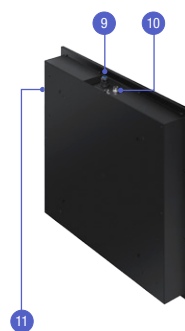
Back of Unit



Rear Connectivity Cover Removed



Power Box



\*External power box included in purchase, but not embedded in product.

**Learn more** [samsung.com/business](http://samsung.com/business) or [samsung.com/b2bdigitalsignage](http://samsung.com/b2bdigitalsignage)  
**Product support** 1-800-SAMSUNG 1-866-SAM4BIZ  
**Follow us** [youtube.com/samsungbizusa](https://www.youtube.com/samsungbizusa) [@SamsungBizUSA](https://twitter.com/SamsungBizUSA)

**SAMSUNG**  
BUSINESS

Samsung Electronics has been named 2015 ENERGY STAR Partner of the Year in the product manufacturing category by the U.S. Environmental Protection Agency (EPA).

©2015 Samsung Electronics America, Inc. Samsung is a registered mark of Samsung Electronics Corp., Ltd. Specifications and design are subject to change without notice. Non-metric weights and measurements are approximate. All brand, product, service names and logos are trademarks and or registered trademarks of their respective manufacturers and companies. See [samsung.com](http://samsung.com) for detailed information. Printed in USA. LFD-OHDSERIESDST-OCT15T

